



LED Industrial Light Solutions



2018 LED LIGHTING CATALOG

SPRING EDITION

Company Profile

Fireflier Lighting Limited was started 8 years ago, by Jorge Wong who has been in the lighting field for past two decades. Jorge, who has been manufacturing and researching lighting products from the early 1990's aims to provide the right product to our clients under the company Fireflier Lighting.

Located in the LED producing&researching center, Fireflier is not only a manufacturer, but also a designer. Most of products are designed by Fireflier's engineers. The LED linear Low Bay light and UFO LED High Bay Light are widely used in the market.

High efficiency production lines, leading technology of LED, excellent and experienced LED engineers and employees, and also 100% satisfied customer service ensures our LED product with high quality and latest design. The production strictly carry out ISO9001 International Quality Certification System and ISO14001 International Environment Certification System.

Based on above, Fireflier aim to produce the right product with best price required by our client in this complicated lighting area. Europe, North America, Australia and also Latin America are our main market.

All in all, Fireflier hope to work with all our friends from the whole world in the LED lighting field and make a contribution to the green earth.

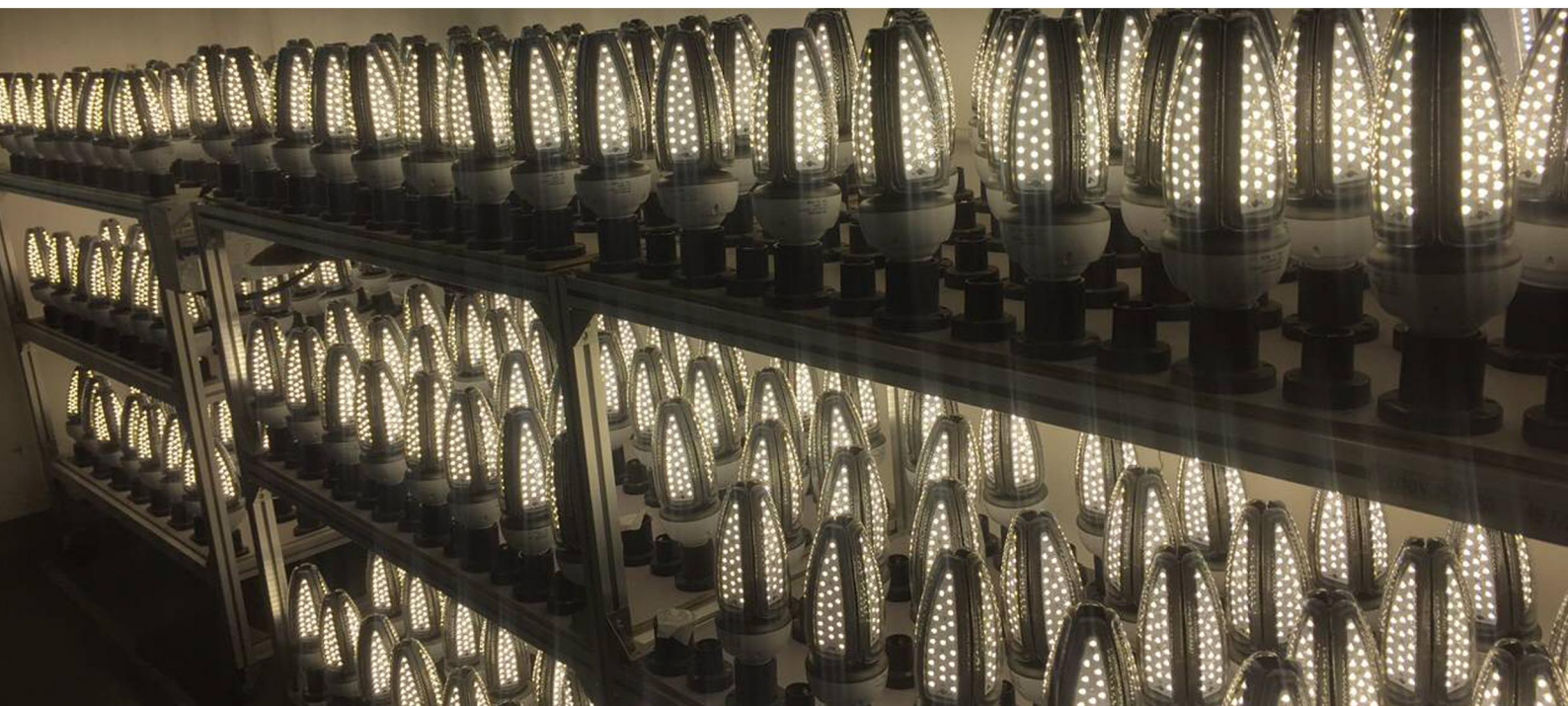
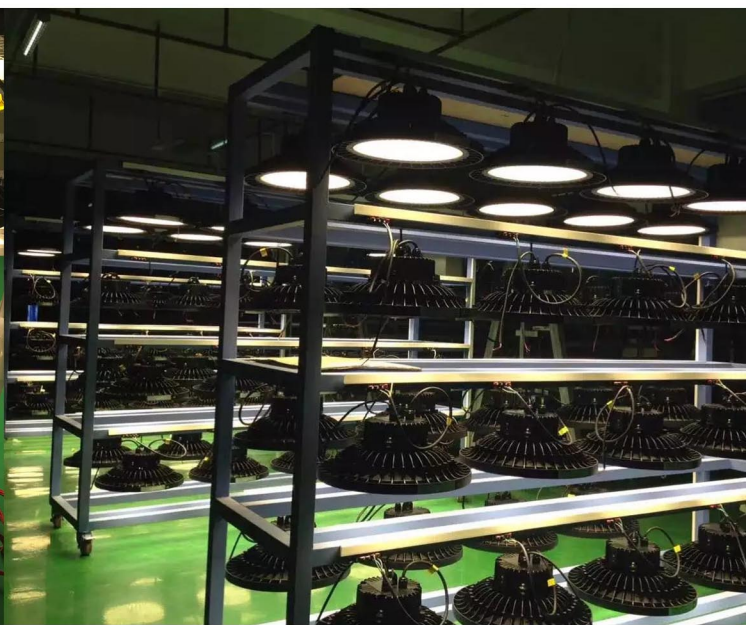
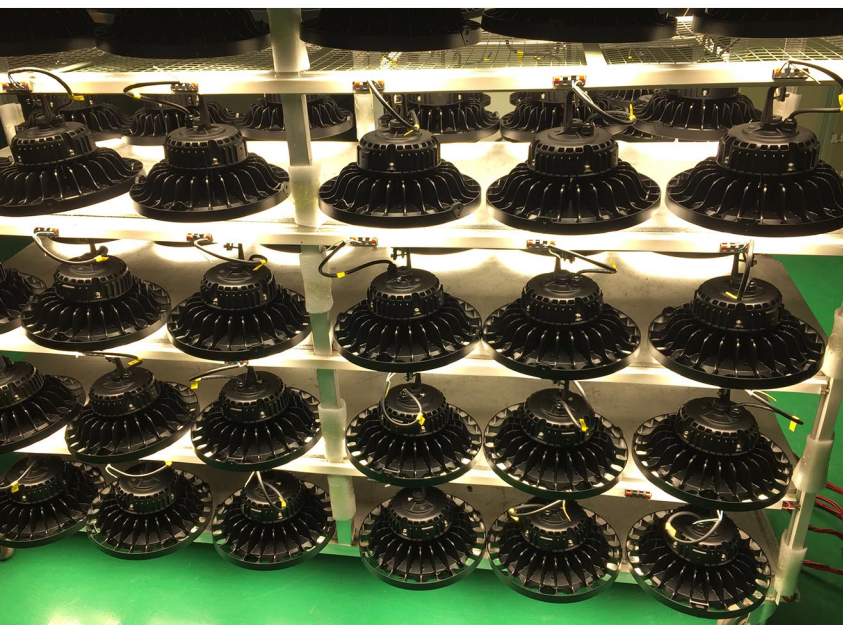
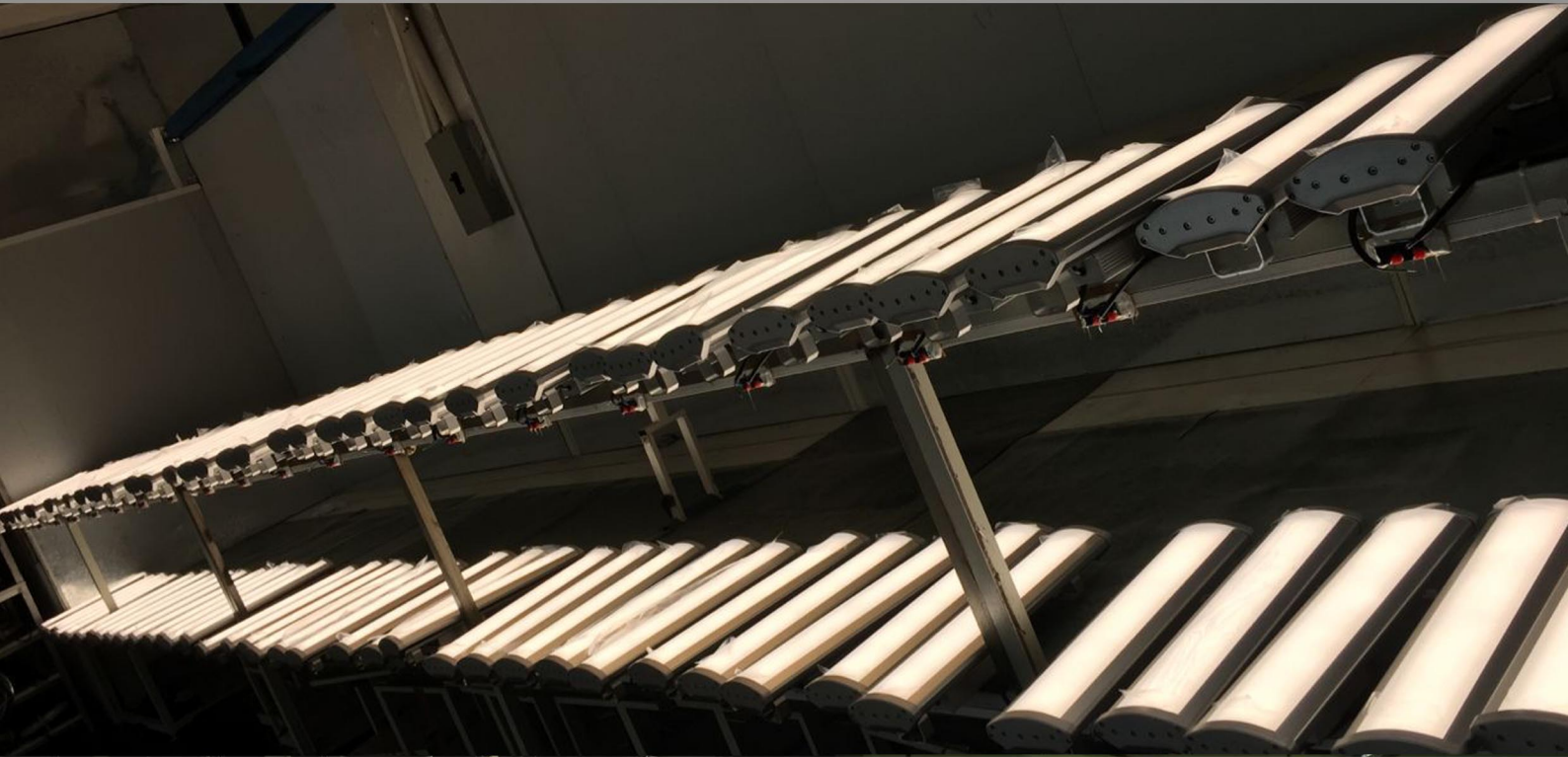
Welcome to Firefler Lighting



our certifications



Aging Test Reference





Ripple
High Bay Light



150lm/w

Model	FR-RR-HBL60	FR-RR-HBL80	FR-RR-HBL100
Wattage	60W	80W	100W
Lumen	9000LM	12000LM	15000LM
Replace(MH/HPS)	150~200W	200~300W	300~400W
Weight	2.2KGS	2.8KGS	2.8KGS
Light Source	Philips&Nicha LED		
Color temperature	2700-6500K		
Power Factor	0.95		
Input Voltage	AC90-305V		
Application	Indoor&Outdoor		
Startup time	Instant		
Dimmable	1-10V/Dali dimmable		
Color rendering	>80		
Finish	Aluminum+PC lens		
Lifespan	50,000 Hours		
Certification	ETL SAA CB CE(EMC LVD) ROHS		
Warranty	5 YEARS		

- Up to 150LM/W
- Anti-glare light
- Save 70%-80% energy
- 60°/90°/120° beam angle
- Easy installation
- Light weight body design
- Maintenance free
- Long lifespan



Fireflier's UFO Led High Bay Light can reach up to 160lm/w. We provide hook, tube and bracket for mounting or hanging installation. Besides,(Dimmable) Microwave sensor&Daylight sensor are provided for more energy-saving.



Ripple
High Bay Light



150lm/w

Model	FR-RR-HBL150	FR-RR-HBL200	FR-RR-HBL240
Wattage	150W	200W	240W
Lumen	22500LM	28000LM	33000LM
Replace(MH/HPS)	400~500W	500~600W	600~800W
Weight	3.9KGS	5.7KGS	5.7KGS
Light Source	Philips&Nicha LED		
Color temperature	2700-6500K		
Power Factor	0.95		
Input Voltage	AC90-305V		
Application	Indoor&Outdoor		
Startup time	Instant		
Dimmable	1-10V/Dali dimmable		
Color rendering	>80		
Finish	Aluminum+PC lens		
Lifespan	50,000 Hours		
Certification	ETL SAA CB CE(EMC LVD) ROHS		
Warranty	5 YEARS		

- Up to 150LM/W
- Anti-glare light
- Save 70%-80% energy
- 60°/90°/120° beam angle
- Easy installation
- Light weight body design
- Maintenance free
- Long lifespan



Fireflier's UFO Led High Bay Light can reach up to 160lm/w. We provide hook, tube and bracket for mounting or hanging installation. Besides,(Dimmable) Microwave sensor&Daylight sensor are provided for more energy-saving.



Crown High Bay Light



150lm/w

Model	FR-BHB100W	FR-BHB150W	FR-BHB200W
Wattage	100W	150W	200W
Lumen	14500LM	21750LM	29000LM
Replace(MH/HPS)	300~400W	400~500W	500~600W
Weight	2.78KGS	3.35KGS	4.0KGS
Light Source	CREE LED		
Color temperature	2700-6500K		
Power Factor	0.95		
Input Voltage	AC90-305V		
Application	Indoor&Outdoor		
Startup time	Instant		
Dimmable	1-10V/Dali dimmable		
Color rendering	>80		
Finish	Aluminum+PC lens		
Lifespan	50,000 Hours		
Certification	ETL SAA CB CE(EMC LVD) ROHS		
Warranty	5 YEARS		

- Back smooth design
- Anti-glare light
- Save 70%-80% energy
- 60°/90°/120° beam angle
- Easy installation
- Light weight body design
- Built-in sensor
- Long lifespan



Crown High Bay Light is with updated smooth back design. This new version is much lighter weight than previous types. Besides, a built-in Microwave sensor&Daylight sensor are provided for more energy-saving.



Titan High Bay Light



140lm/w

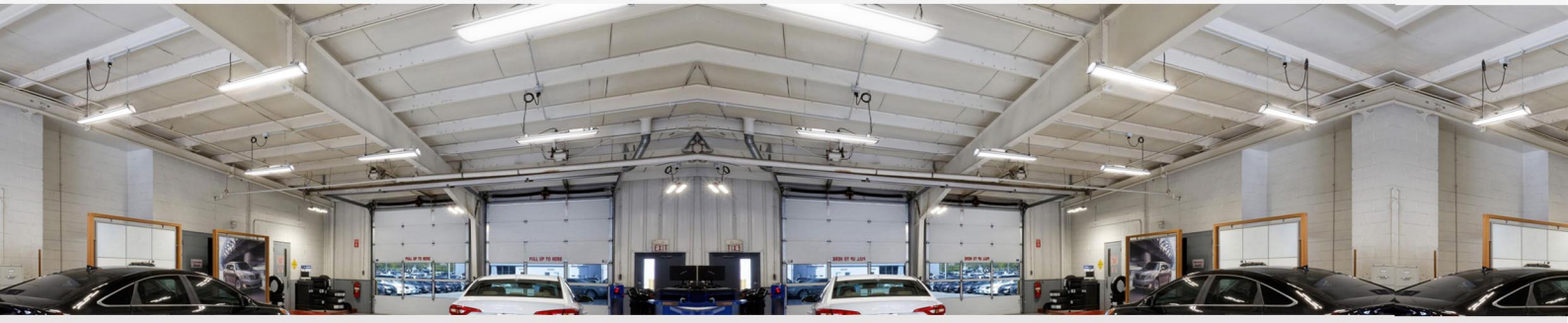
Model	FR-UFO-300W	FR-UFO-400W	FR-UFO-480W
Wattage	300W	400W	480W
Lumen	42000LM	55000LM	66000LM
Replace(MH/HPS)	700~1000W	900~1200W	1000~1500W
Weight	13.65KGS		
Light Source	PHILIPS LED		
Color temperature	2700-6500K		
Power Factor	0.95		
Input Voltage	AC90-305V		
Application	Indoor&Outdoor		
Startup time	Instant		
Dimmable	1-10V/Dali dimmable		
Color rendering	>80		
Finish	Aluminum+PC lens		
Lifespan	50,000 Hours		
Certification	ETL DLC SAA CB CE(EMC LVD) ROHS		
Warranty	5 YEARS		

- 300W~480W unique design
- 140lm/w light efficiency
- Save 70%-80% energy
- 90°/120° reflector
- Easy installation
- Chain/trunnion/slipfitter mount
- Built-in sensor
- Long lifespan

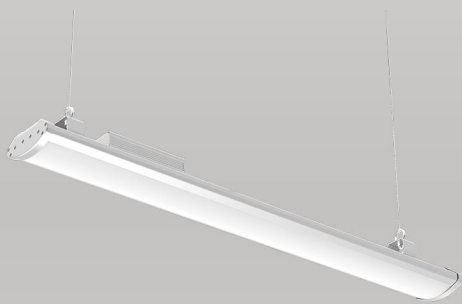


PHILIPS

Titan High Bay Light is with powerful design from 300W to 480W. It is perfect solution for the house with over 15meters height. Besides, Microwave sensor&Daylight sensor are provided for more energy-saving.



Pioneer Low Bay Light



Model	FR-LB100-B	FR-LB120-B	FR-LB150-B	FR-LB200-B
Wattage	100W	120W	150W	200W
Lumen	10000LM	12000LM	15000LM	20000LM
Size	900*150*67	900*150*67	1200*150*67	1500*150*67
Weight	4.9KGS	4.9KGS	6.2KGS	7.2KGS
Light Source	SAMSUNG			
Color temperature	2700-7000K			
Power Factor	0.95			
Input Voltage	AC100-277V			
Application	Indoor(IP65)			
Installation	Mounted/Suspended			
Dimmable	Can be customized			
Color rendering	>80			
Finish	Aluminum+PC			
Lifespan	50,000 Hours			
Certification	CE(EMC LVD) ROHS UL			
Warranty	5 YEARS			

- Much larger cooling surface
- Exquisite appearance design
- Save 60%-70% energy
- Low lumen depreciation
- Easy installation
- Anti-Glare design
- Maintenance free
- Long lifespan



Pioneer Led Low Bay Light is brilliantly designed as a one-for-one replacement to traditional High Bays. With nice looking, and better lighting performance, make it be more and more popular in the market.



E40

High Bay Light



Model	BUH-150	BUH-200
Wattage	150W	200W
Lumen	20000LM	27000LM
Replace(MH/HPS)	400-500W	500-600W
Weight	1.8KGS	
Light Source	Philips LED	
Color temperature	2700-7000K	
IP Grade	IP56	
Input Voltage	AC100-277V	
Beam Angle	60°/90°/120°	
Dimmable	1-10V PWM	
Base	E39/E40/Hook	
Color rendering	>80	
Accessory	Hook, Microwave sensor	
Lifespan	50,000 Hours	
Certification	ETL DLC CE(EMC LVD) ROHS	
Warranty	5 YEARS	

- Up to 140lm/w
- 60°/90°/120° beam angle
- Save 60%-70% energy
- Internal driver
- Easy installation
- Light weight body design
- Maintenance free
- Long lifespan

PHILIPS

Fireflier's new E40 LED High Bay Light 150W 200W are unique designed with up to 140lm/w, microwave sensor, 1-10V dimming and hook installation. 60°/90°/120° lens are optional for better lighting experience.



IP64

Led Corn Light



Model	FR-CL27W	FR-CL36W	FR-CL45W	FR-CL54W
Wattage	27W	36W	45W	54W
Lumen	2900LM	3900LM	4900LM	5900LM
Size	Φ93x181mm	Φ93x215mm	Φ93x246mm	Φ93x270mm
Weight	600G	700G	1000G	1150G
Light Source	Epistar			
Color temperature	2700-7000K			
Power Factor	0.95			
Input Voltage	AC100-277V			
Application	Indoor&Outdoor(IP64)			
Cover	Clear/Frosted			
Beam Angle	360°			
Color rendering	>80			
Finish	AL Alloy+PC			
Lifespan	50,000 Hours			
Certification	UL CE(EMC LVD) ROHS			
Warranty	3 YEARS			

- 360degree beam angle
- Save 60%-70% energy
- Low lumen depreciation
- Easy installation
- IP64 Waterproof
- Maintenance free
- Long lifespan

EPISTAR

With IP64 and 360degree beam angle, IP64 Led Corn Light is perfect solution for garden lighting, street lighting, warehouse lighting, shop lighting, etc.



IP64

Led Corn Light

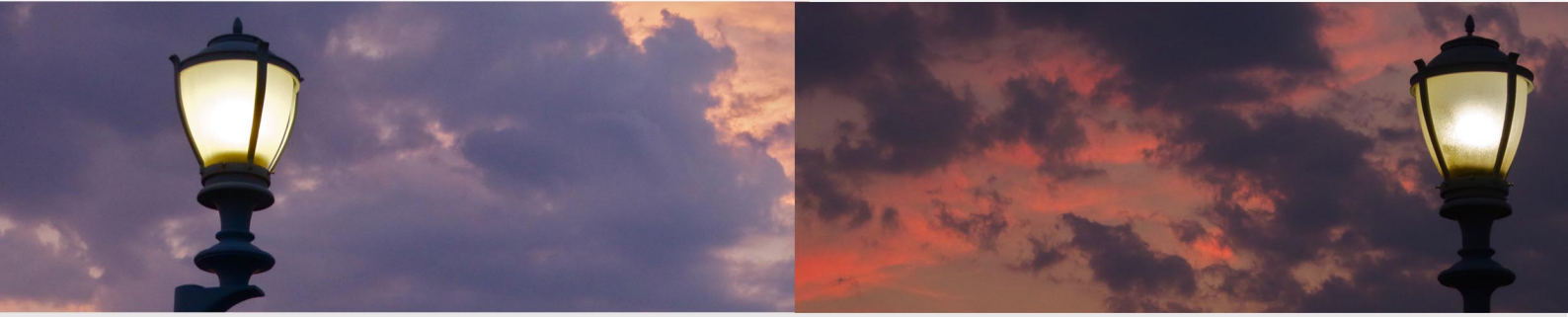


Model	FR-CL80W	FR-CL100W	FR-CL120W
Wattage	80W	100W	120W
Lumen	8800LM	11000LM	13000LM
Size	Φ120x314mm	Φ120x334mm	Φ120x354mm
Weight	1700G	2200G	2400G
Light Source	Epistar		
Color temperature	2700-7000K		
Power Factor	0.95		
Input Voltage	AC100-277V		
Application	Indoor&Outdoor(IP64)		
Cover	Clear/Frosted		
Beam Angle	360°		
Color rendering	>80		
Finish	AL Alloy+PC		
Lifespan	50,000 Hours		
Certification	UL CE(EMC LVD) ROHS		
Warranty	3 YEARS		

- 360degree beam angle
- Save 60%-70% energy
- Low lumen depreciation
- Easy installation
- IP64 Waterproof
- Maintenance free
- Long lifespan

EPISTAR

With IP64 and 360degree beam angle, IP64 Led Corn Light is perfect solution for garden lighting, street lighting, warehouse lighting, shop lighting, etc.



IP65
Led Corn Light



Model	FR-CL10W-IP65-B	FR-CL20W-IP65-B
Wattage	10W	20W
Lumen	1100LM	2200LM
Base	E26/E27	
Weight	350G	
Light Source	Epistar	
Color temperature	2700-7000K	
Power Factor	0.95	
Input Voltage	AC100-277V	
Application	Indoor&Outdoor(IP65)	
Cover	Clear/Frosted	
Beam Angle	360°	
Color rendering	>80	
Finish	AL Alloy+PC	
Lifespan	50,000 Hours	
Certification	UL CE(EMC LVD) ROHS	
Warranty	3 YEARS	

- New type design
- Save 60%-70% energy
- Low lumen depreciation
- Easy installation
- IP65 Waterproof
- Maintenance free
- Long lifespan

EPISTAR



Based on IP65 design, this Led Corn Light is perfect solution for both outdoor and indoor area where the light need to be water-proof.



IP65

Led Corn Light



Model	FR-CL30W-IP65-B	FR-CL40W-IP65-B	FR-CL50W-IP65-B
Wattage	30W	40W	50W
Lumen	3800LM	4900LM	6200LM
Base	E27/40	E27/40	E27/40
Weight	900G	900G	900G
Light Source	Epistar		
Color temperature	2700-7000K		
Power Factor	0.95		
Input Voltage	AC100-277V		
Application	Indoor&Outdoor(IP65)		
Cover	Clear/Milky		
Beam Angle	360°		
Color rendering	>80		
Finish	AL Alloy+PC		
Lifespan	50,000 Hours		
Certification	UL CE(EMC LVD) ROHS		
Warranty	3 YEARS		

- New type design
- Save 60%-70% energy
- Low lumen depreciation
- Easy installation
- IP65 Waterproof
- Maintenance free
- Long lifespan

EPISTAR



Based on IP65 design, this Led Corn Light is perfect solution for both outdoor and indoor area where the light need to be water-proof.



IP65
Led Corn Light



Model	FR-CL100-P65	FR-CL120-P65	FR-CL150-P65	FR-CL180-P65
Wattage	100W	120W	150W	180W
Lumen	11000LM	13000LM	16500LM	20000LM
Base	E27/40	E27/40	E27/40	E27/40
Weight	2500G	2500G	2500G	2500G
Light Source	LED(LG Innotech SMD)			
Color temperature	2700-7000K			
Power Factor	0.95			
Input Voltage	AC100-277V			
Application	Indoor&Outdoor			
Startup time	Instant			
Beam Angle	360°			
Color rendering	>82			
Finish	Magnesium Alloy+PC			
Power Range	60W 80W 100W 120W 150W 180W			
Certification	CE(EMC LVD) ROHS			
Warranty	5 YEARS			

- IP65 Waterproof
- Up to 130LM/W
- External MW driver
- Easy installation
- Magnesium Alloy Body
- Maintenance free
- Long lifespan



With up to 200W powerful design, this IP65 Led Corn Light is perfect solution for Industrial room and other area with 5-10 meters height.



Contact Us

Tel: 86-755-32824003

Web: www.fireflier.com

Email: info@fireflier.com

Add: Baoan, SZ, China

* Because Fireflier is continually improving its products, specifications are subject to change without notice.