



# 2023 LED LIGHTING

SPRING EDITION

# CATALOG





# Company Profile

Fireflir Lighting Limited was started 13 years ago, by Jorge Wong who has been in the lighting field for past two decades. Jorge, who has been manufacturing and researching lighting products from the early 1990's aims to provide the right product to our clients under the company Fireflir Lighting.

Located in the LED producing&researching center, Fireflir is not only a manufacturer, but also a designer. Most of products are designed by Fireflir's engineers. The LED High Mast Lighting and LED High Bay Lights are widely used in the market.

High efficiency production lines, leading technology of LED, excellent and experienced LED engineers and employees, and also 100% satisfied customer service ensures our LED product with high quality and latest design. The production strictly carry out ISO9001 International Quality Certification System and ISO14001 International Environment Certification System.

Based on above, Fireflir aim to produce the right product with best price required by our client in this complicated lighting area. Europe, North America, Australia and also Latin America are our main market.

All in all, Fireflir hope to work with all our friends from the whole world in the LED lighting field and make a contribution to the green earth.



# Welcome to Fireflir Lighting



Factory Building



Reception Area



Production Area



Production Area

## Certificates

### PATENT PROTECTION





# Welcome to Fireflir Lighting



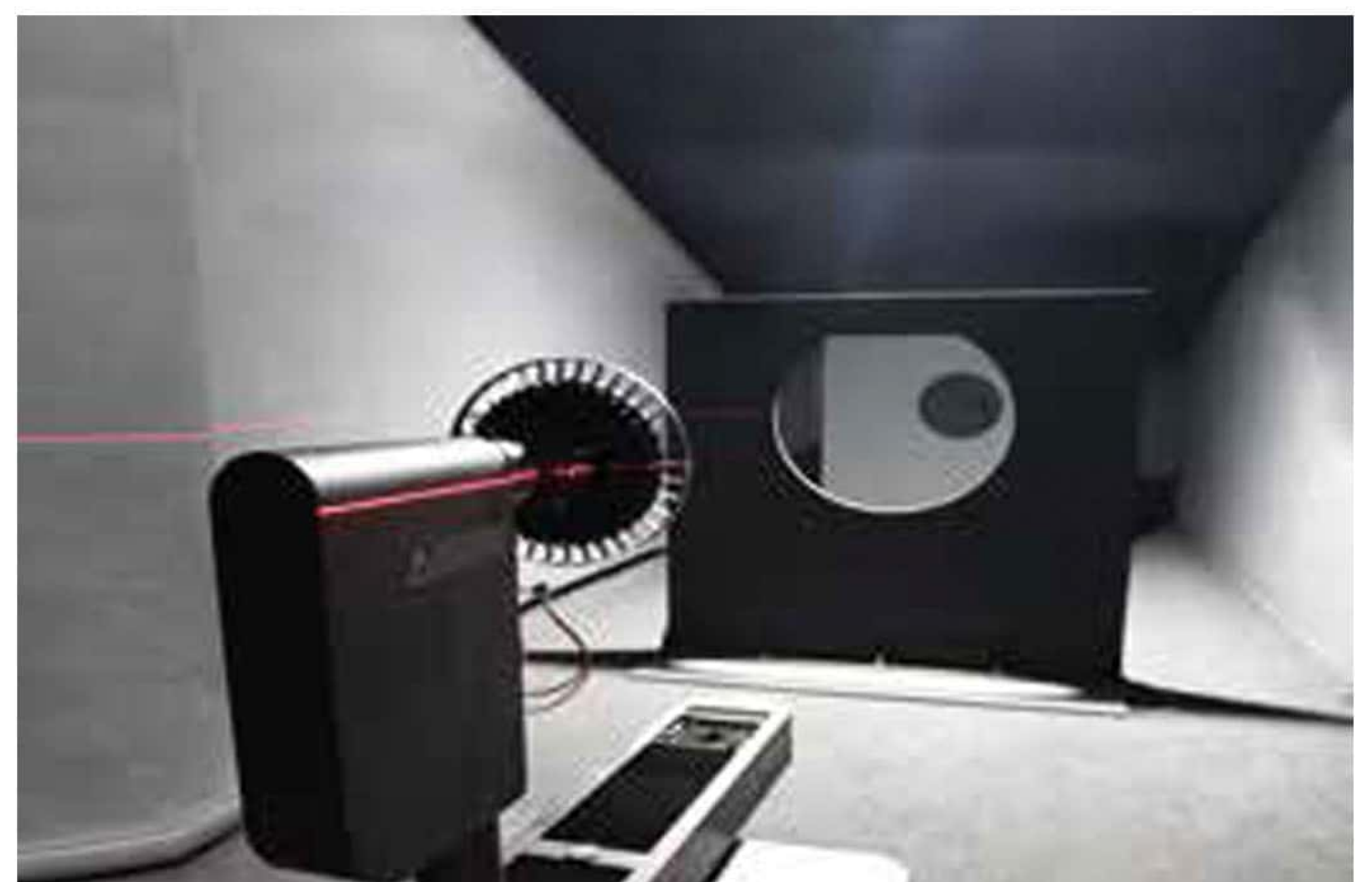
Waterproof test



Temperature&humidity test



Goniophotometers system



Goniophotometers system



Integrating sphere system



Salt spray test



Vibration test



Laser Engraving machine



# Aging Test Reference





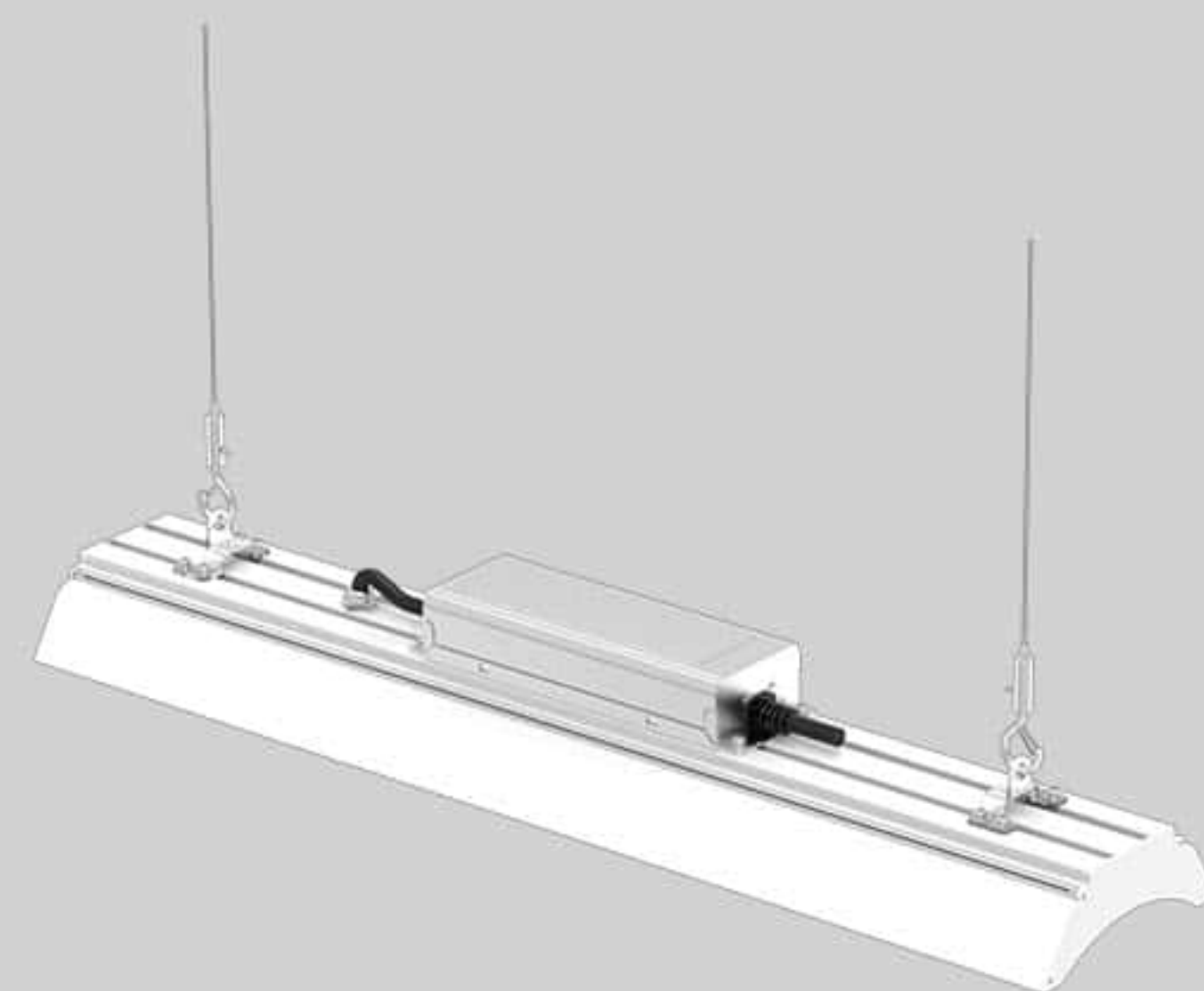
# Contents



**P1**



**P2**



**P3**



**P4**



**P5**



**P6**



**P7**



**P8**



**P9**



**P10**



**P12**



**P13**



**P15**



**P16**



**P17**





## CCT&Power Selectable High Bay Light



150/190 lm/w

Model	FR-IHBL-200
Wattage	100W 150W 200W Field Selectable
Lumen Efficacy	150LM~190LM/W
Size(mm)	300(D)*97(H)
Weight	2.8KGS
Light Source	Bridgelux 2835
Color temperature	3000K/4000K/5000K/5700K or 4000K&5000K Dual CCT
Power Factor	0.95
Input Voltage	AC100-277V
Beam angle	90°/120°
IP & IK	IP65 & IK08
Dimmable	0-10V
Color rendering	>80
Finish	Aluminum+PC lens
Lifespan	50,000 Hours
Certification	CE ROHS CB C-TICK FCC PSE
Warranty	5 YEARS

- Power Field Selectable
- Dual CCT Tunable
- Hanging/mounted installation
- 90°/120° lens
- Light weight design
- Plug&play sensor
- Emergency power available
- 0-10V Dimming



The Field Selectable High Bay Light features two color temperatures and three wattage settings, allowing it to be configured in six different ways. This makes it ideal for outfitting properties with differing high ceiling heights and lighting tone requirements.





Titan II  
High Bay Light



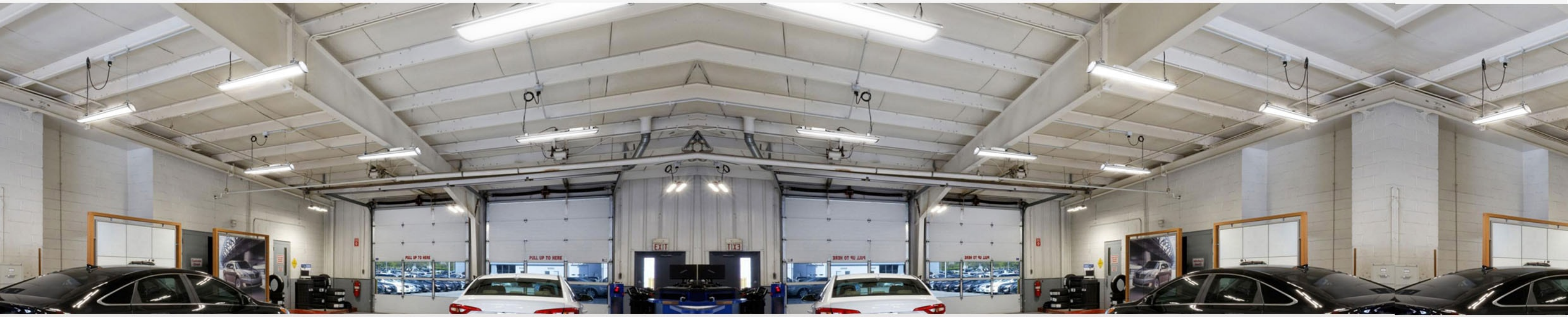
170lm/w

- High Power design
- Patented optical lens
- Hanging/Mounted installation
- 15°/25°/40° lens available
- Aluminum reflector optional
- PC diffuser available
- Emergency backup optional
- 0-10V/Dali Dimming

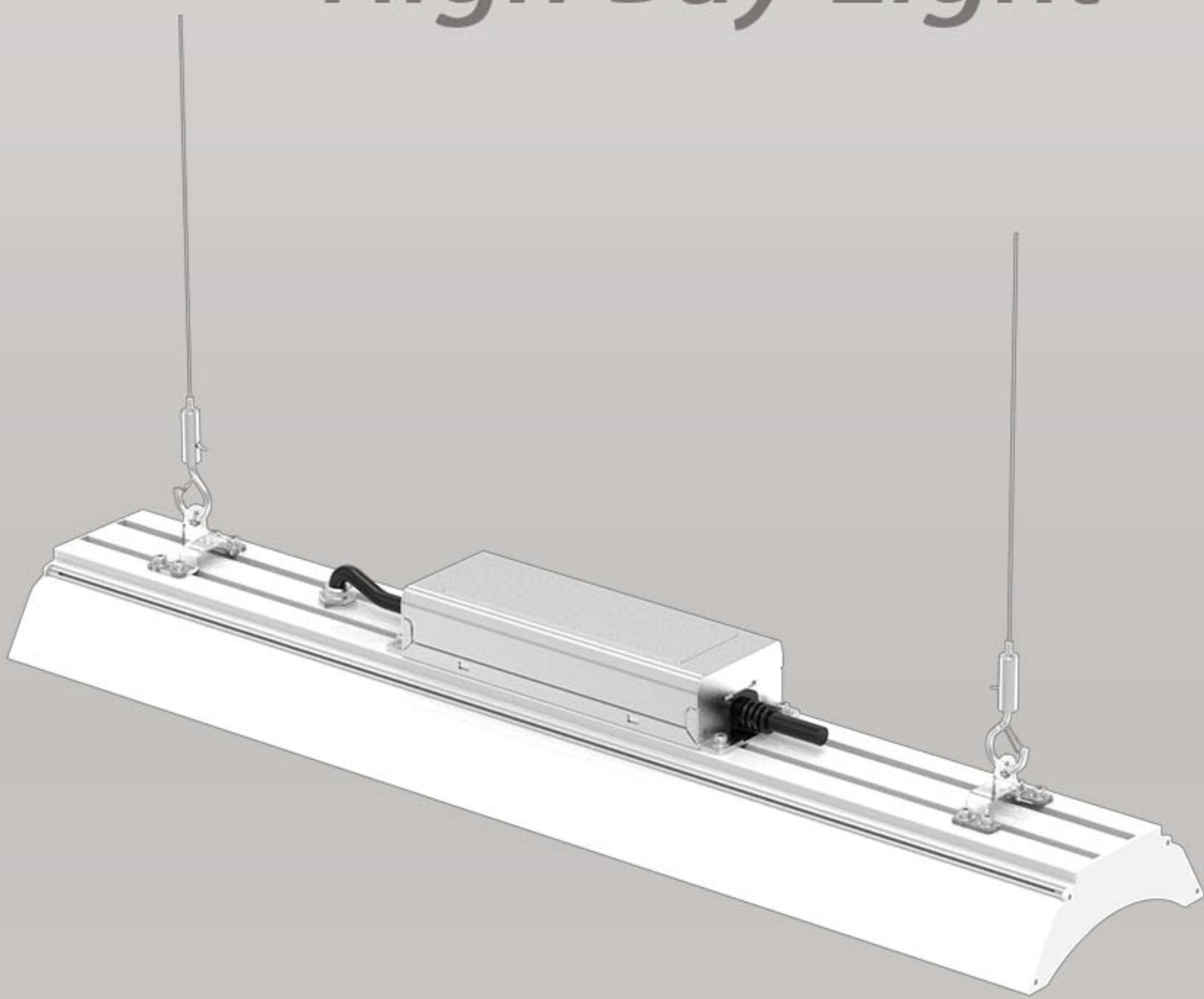
Model	FR-HB-300W	FR-HB-400W	FR-HB-500W
Wattage	300W	400W	500W
Lumen	51000LM	68000LM	85000LM
Size(mm)	400(D)*197(H)	490(D)*231(H)	
Weight	4.9KGS	8.5KGS	
Light Source	SMD2835 / 5050		
Color temperature	2700-6500K		
Power Factor	0.95		
Input Voltage	AC90-305V/AC200-480V		
Beam angle	15°/25°/40°/60°/90°/120°		
IP & IK	IP65 & IK08		
Dimmable	0-10V/Dali dimming (Optional)		
Color rendering	>80 or 70		
Finish	Aluminum+PC lens		
Lifespan	50,000 Hours		
Certification	CE(EMC LVD) ROHS		
Warranty	5 YEARS		

This Professional High Power LED High Bay Light is designed for use in large warehouses, factories, workshops, sport halls and the like. Featuring a robust design, it has a compact housing optimized for heat dissipation and reduced dust accumulation. It also comes with various beam angles that offer precise solutions for installation above 20m.





Galaxy  
High Bay Light



140lm/w

Model	FR-LB50-G	FR-LB100-G	FR-LB150-G	FR-LB200-G
Wattage	50W	100W	150W	200W
Lumen	7000LM	14000LM	21000LM	28000LM
Size	305*133*77	605*133*83	905*133*83	1205*133*83
Weight	1.3KGS	2.2KGS	3.0KGS	3.5KGS
Light Source	2835 SMD			
Color temperature	2700-6500K			
Power Factor	0.95			
Input Voltage	AC100-277V			
IP Grade	IP65			
Beam Angle	60° / 90°/ 80*155°			
Dimmable	1-10V/Dali optional			
Color rendering	>80			
Finish	Aluminum+PC			
Lifespan	50,000 Hours			
Certification	CE(EMC LVD) ROHS			
Warranty	5 YEARS			

- Light&elegant design
- IP65 Waterproof
- 60° / 90°/ 80\*155° lens
- 1-10V/Dali dimming
- Emergency mode available
- Hanging&Mounted installation
- Microwave sensor optional



Galaxy Led High Bay Light is brilliantly designed as a one-for-one replacement to traditional High Bays. With nice looking,and better lighting performance,make it be more and more popular in the market.





# Arena

## Vapor Tight Light



Model	M2W20	M3W30	M4W40	M5W50
Wattage	20W	30W	40W	50W
Lumen	2200-2800lm	3300-4200lm	4400-5600lm	5500-7000lm
Size(mm)	600*80*45	900*80*45	1200*80*45	1500*80*45
Weight	0.6KGS	0.9KGS	1.2KGS	2KGS
Light Source	2835 SMD			
Color temperature	2700-6500K			
Power Factor	0.95			
Input Voltage	AC100-277V			
IP Grade	IP65			
Installation	Mounted/Suspended			
Dimmable	1-10V optional			
Color rendering	>80			
Finish	Aluminum+PC			
Lifespan	50,000 Hours			
Certification	CE(EMC LVD) ROHS			
Warranty	5 YEARS			

- Light&elegant design
- IP65 Waterproof
- Milky&clear cover
- 1-10V dimming
- Emergency mode available
- Haning&Mounted installation
- Microwave sensor optional



Arena LED Vapor Tight Light is brilliantly designed as a one-for-one replacement to fluorescent tube fixtures. With IP65 design, it is widely used in garages, car washing rooms, shops and more.





# Aviator

## Vapor Tight Light



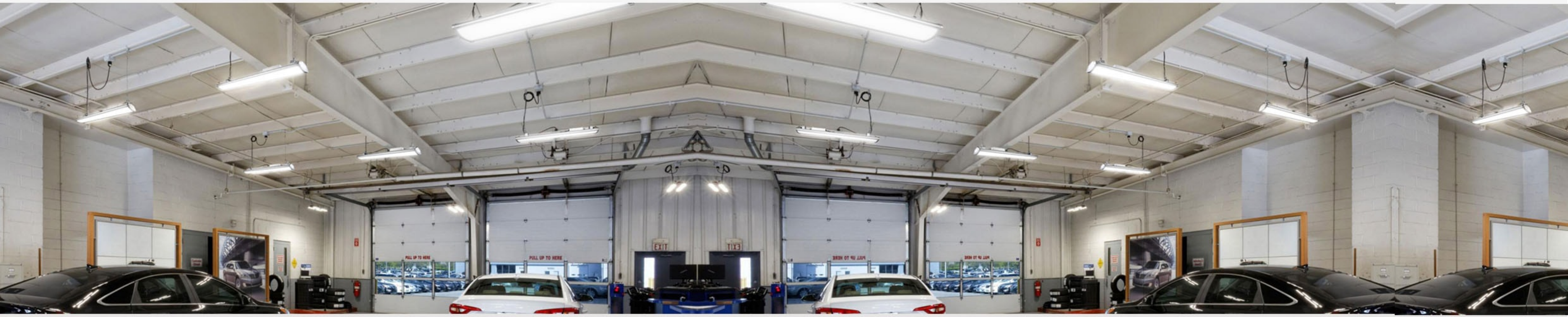
Model	V65X2-20	V65X2-30	V65X4-40	V65X4-50	V65X5-60	V65X5-80
Wattage	20W	30W	40W	60W	60W	80W
Lumen	2600	3900	5200	7800	7800	10400
Size(mm)	600*76*67		1200*76*67		1500*76*67	
Weight	1.5KGS		2.5KGS		3.2KGS	
Light Source	2835 SMD					
Color temperature	2700-6500K					
Power Factor	0.95					
Input Voltage	AC200-240V					
IP Grade	IP65					
Installation	Mounted/Suspended					
Dimmable	1-10V/Dali optional					
Color rendering	>80					
Finish	Aluminum+PC					
Lifespan	50,000 Hours					
Certification	CE(EMC LVD) ROHS					
Warranty	5 YEARS					

- Series connection
- IP65 Waterproof
- Milky&clear cover
- 1-10V/Dali dimming
- Emergency mode available
- Haning&Mounted installation
- Microwave sensor optional



Aviator LED Vapor Tight Light is brilliantly designed as a one-for-one replacement to fluorescent tube fixtures. With IP65 design, it is widely used in garages, car washing rooms, factory and more.





Maxima  
Tri-proof Light



140lm/w

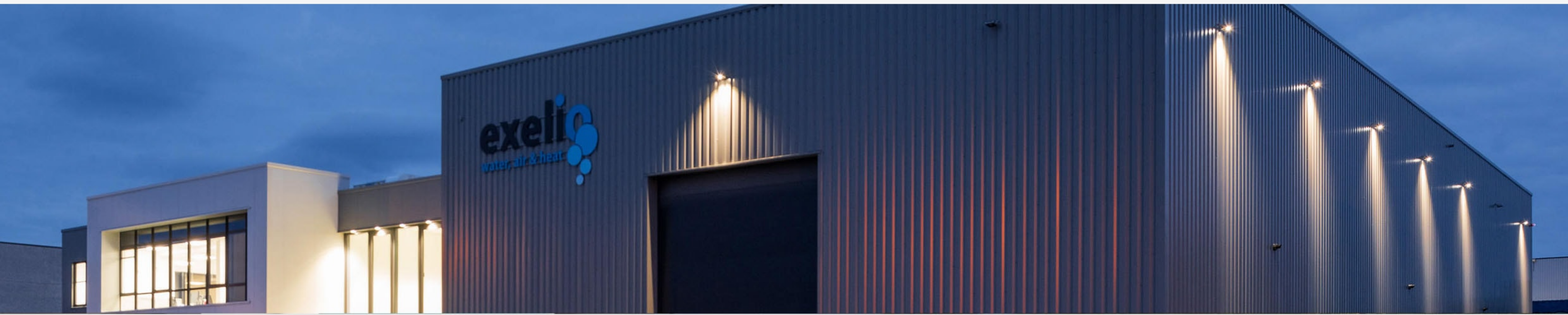
Model	FR-LB50-E	FR-LB80-E	FR-LB100-E	FR-LB150-E
Wattage	50W	80W	100W	150W
Lumen	7000LM	11200LM	14000LM	21000LM
Size	600*116*60	900*116*60	1200*116*60	1500*116*60
Weight	1.8KGS	2.45KGS	3.2KGS	4.0KGS
Light Source	2835 SMD			
Color temperature	2700-6500K			
Power Factor	0.95			
Input Voltage	AC100-277V			
IP Grade	IP65			
Installation	Mounted/Suspended			
Dimmable	1-10V/Dali optional			
Color rendering	>80			
Beam Angle	30°/60°/90°/120°			
Lifespan	50,000 Hours			
Certification	CE(EMC LVD) ROHS			
Warranty	5 YEARS			

- Light&elegant design
- IP65 Waterproof
- Milky&clear cover
- 1-10V/Dali dimming
- Emergency mode available
- Haning&Mounted installation
- Microwave sensor optional



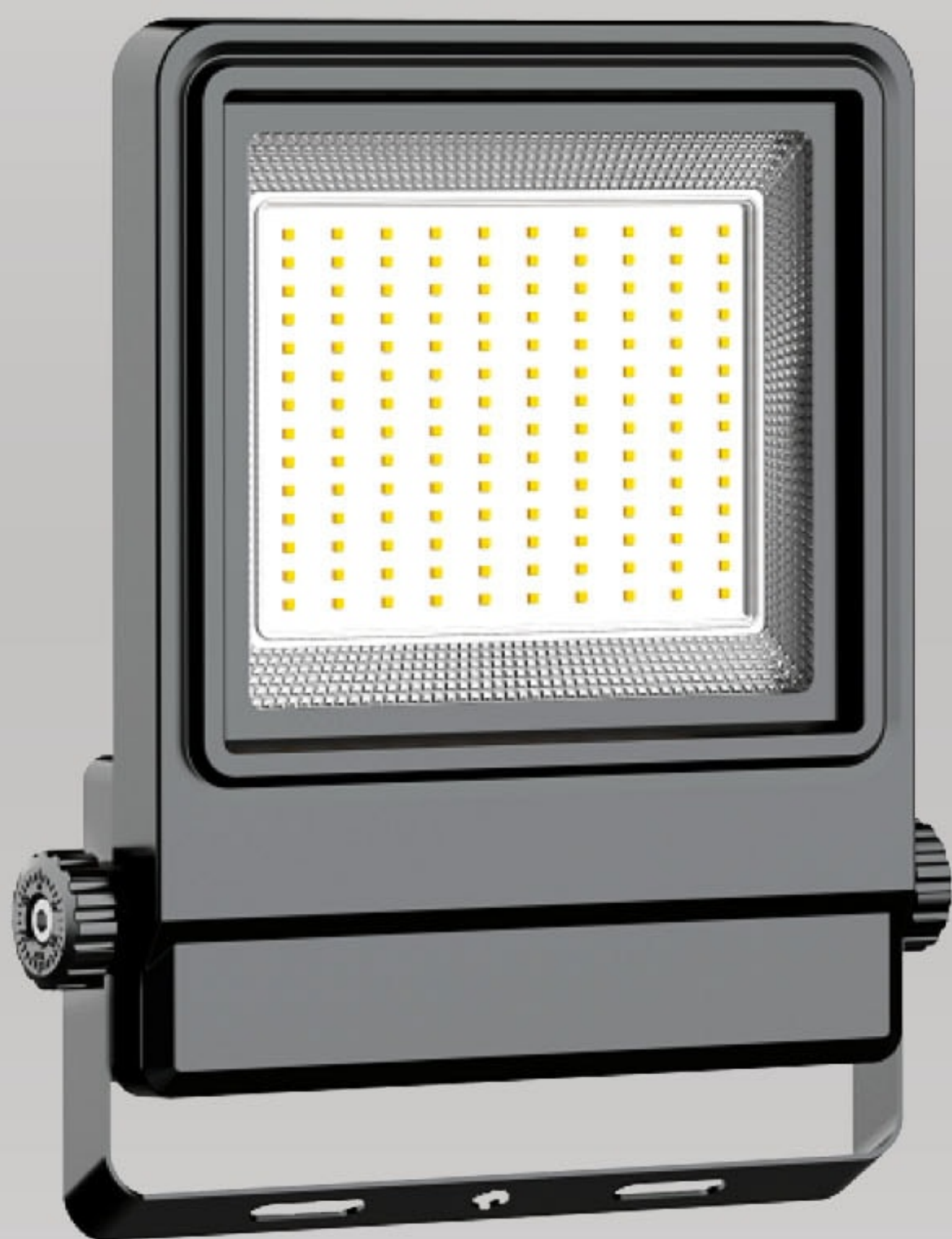
Maxima Led Low Bay Light is brilliantly designed as a one-for-one replacement to traditional High Bays. With 30/60/90 degree narrow beam angle, it is an ideal solution for warehouse lighting.





# Azra

## Flood Light



140lm/w

Model	FR-FL100W	FR-FL150W	FR-FL200W	FR-FL300W
Wattage	100W	150W	200W	300W
Lumen	15000LM	22500LM	30000LM	45000LM
Size(mm)	301*280*55	358*320*61	412*366*63	486*406*69
Weight	2.6KGS	3.6KGS	5.2KGS	8.8KGS
Light Source	Osram 2835			
Color temperature	2700-6500K			
Power Factor	0.95			
Input Voltage	AC90-305V			
Beam angle	120° OR PC lens(25° 45° 60° 90° 70*150° )			
IP Grade	IP66			
Dimmable	0-10V (Optional)			
Color rendering	>80			
Finish	Aluminum+PC lens			
Lifespan	50,000 Hours			
Certification	CE(EMC LVD) ROHS			
Warranty	5 YEARS			

- Streamline body design
- Tempered glass cover
- 20-300W power range
- Various beam angle
- High lumen output 150lm/w
- Pir sensor optional
- Excellent cooling performance

Azra LED flood light is with streamline body and multi-angle lens design. Available with symmetric&asymmetric lens, almost all applications covered, like recreational sports, building lighting...etc.





Modular  
Flood Light



140lm/w

Model	FLM50W	FLM100W	FLM150W	FLM200W	FLM300W
Wattage	50W	100W	150W	200W	300W
Lumen	7000LM	14000LM	21000LM	28000LM	35000LM
Size(mm)	133*372*97	220*372*97	310*372*97	398*372*97	486*372*97
Weight	1.8KGS	3.2KGS	4.0KGS	4.5KGS	5.5KGS
Light Source	Osram 2835				
Color temperature	2700-6500K				
Power Factor	0.95				
Input Voltage	AC90-305V				
Beam angle	25° 45° 60° 90° 80*150° 90*120°				
IP Grade	IP66				
Dimmable	0-10V (Optional)				
Color rendering	>80				
Finish	Aluminum+PC lens(Glass cover optional)				
Lifespan	50,000 Hours				
Certification	CE(EMC LVD) ROHS				
Warranty	5 YEARS				

- Modular body design
- Tempered glass cover optional
- 50-300W power range
- Various beam angle
- High lumen output 140lm/w
- Optimized cable layout
- Excellent cooling performance

Artemis LED flood light is with modular body and multi-angle lens design. Available with symmetric&asymmetric lens, almost all applications covered, like recreational sports, building lighting...etc.





# Helios

## Sport Light



150lm/w

Model	HMH500W	HMH1000W	HMH1500W	HMH1800W
Wattage	500W	1000W	1500W	1800W
Lumen	75000LM	150000LM	225000LM	252000LM
Size(mm)	150*490*140	315*490*155	428*490*155	555*490*155
Weight	16KGS	29KGS	41KGS	41KGS
Light Source	SMD 3030			
Color temperature	2700-6500K			
Power Factor	0.95			
Input Voltage	AC90-305V			
Beam angle	10°/ 25°/45°/60°/90°			
IP Grade	IP66			
Dimmable	0-10V (Optional)			
Color rendering	>70			
Finish	Aluminum+PC lens+Glass cover			
Lifespan	50,000 Hours			
Certification	CE(EMC LVD) ROHS			
Warranty	5 YEARS			

- Robust body design
- Tempered glass cover
- 500-1800W power range
- Various beam angle
- High lumen output 150lm/w
- Reflector available
- Excellent cooling performance

Helios Sport light is with robust body and multi-angle lens design. Available with tempered glass cover protection, almost all applications covered, like recreational sports, building lighting...etc.





Premium Stadium Light



150lm/w

- Upward light shield
- Easy adjustable mount
- 500-1200W power range
- Various beam angle
- High lumen output 150lm/w
- Salt spray resistant
- Excellent cooling performance

Model	SPL500W	SPL800W	SPL1000W	SPL1200W
Wattage	500W	800W	1000W	1200W
Lumen	75000LM	120000LM	150000LM	180000LM
Size(mm)	449*443*442	449*443*482	512*555*513	512*555*533
Weight	14.0KGS	15.0KGS	25.0KGS	27.0KGS
Light Source	SMD 5050			
Color temperature	2700-6500K			
Power Factor	0.95			
Input Voltage	AC90-305V			
Beam angle	15° 25° 40° 60°			
IP Grade	IP66			
Dimmable	1-10V (Optional)			
Color rendering	>70			
Finish	Aluminum+PC lens			
Lifespan	50,000 Hours			
Certification	CE(EMC LVD) ROHS			
Warranty	5 YEARS			

Premium Sport light is purpose-built and designed for the ideal illumination of almost any sporting venue. Multiple beam patterns and lumen packages offer a high degree of customization for indoor or outdoor venues.





Premium Stadium Light



120lm/w

Model	SPL500W-B	SPL750W	SPL1000W-B	SPL1200W-B
Wattage	500W	750W	1000W	1200W
Lumen	60000LM	90000LM	120000LM	144000LM
Size(mm)	449*443*442	449*443*482	512*555*513	512*555*533
Weight	14.0KGS	15.0KGS	25.0KGS	27.0KGS
Light Source	COB			
Color temperature	2700-6500K			
Power Factor	0.95			
Input Voltage	AC90-305V			
Beam angle	15° 23° 38° 45° 60°			
IP Grade	IP66			
Dimmable	1-10V (Optional)			
Color rendering	>70			
Finish	Aluminum+ Glass cover			
Lifespan	50,000 Hours			
Certification	CE(EMC LVD) ROHS			
Warranty	5 YEARS			

- Upward light shield
- Easy adjustable mount
- 500-1200W power range
- Various beam angle
- High lumen output 150lm/w
- Salt spray resistant
- Excellent cooling performance

Premium Sport light is purpose-built and designed for the ideal illumination of almost any sporting venue. Multiple beam patterns and lumen packages offer a high degree of customization for indoor or outdoor venues.





Parking Lot  
Led Light



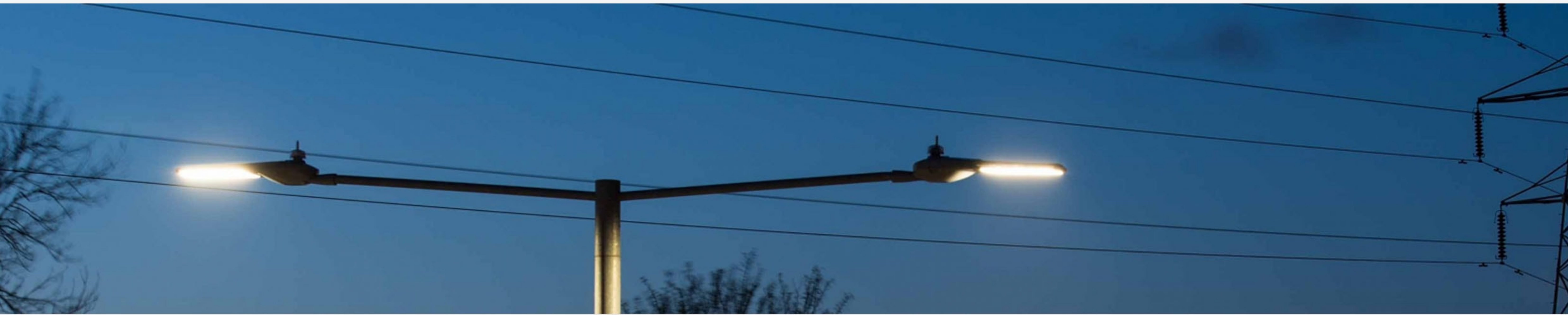
145lm/w

Model	FR-SL-100W	FR-SL-150W	FR-SL-200W	FR-SL-300W
Wattage	100W	150W	200W	300W
Lumen	14500LM	21750LM	29000LM	43500LM
Size(mm)	435*277*75		520*277*75	600*322*75
Weight	4.5KGS		5.5KGS	7.15KGS
Light Source	Lumileds 3030			
Color temperature	2700-6500K			
Power Factor	0.95			
Input Voltage	AC100-277V/AC277-480V			
IP & IK	IP65 & IK08			
Sensor	Photocell optional			
Beam Angle	TYPE III/IV/V			
Color rendering	> 70			
Finish	AL+PC lens			
Lifespan	50,000 Hours			
Certification	UL DLC CE(EMC LVD) ROHS			
Warranty	5 YEARS			

- Various installation brackets
- cETLus cULus DLC 5.1 certified
- 0-10V dimming
- Photocell sensor available
- SPD6KV
- Type III/IV/V beam angle
- Microwave sensor available

Outdoor Parking Lot Lights is specially designed to help illuminate your property or parking lot in an economical and energy-efficient way. Created for outdoor use, this parking lot light is made of heavy-duty aluminum with a powder-coated finish that will not rust.





# Galaxy

## Led Street Light



140lm/w

Model	FR-STG30W	FR-STG60W	FR-STG80W	FR-STG100W
Wattage	30W	60W	80W	100W
Lumen	4200LM	8400LM	11200LM	14000LM
Size	424*208*94mm		519*297*111mm	
Weight	2.8KGS		4.2KGS	
Light Source	SMD 2835			
Color temperature	2700-6500K			
Power Factor	0.95			
Input Voltage	AC100-277V			
IP & IK	IP66 & IK08			
Sensor	Photocell optional			
Beam Angle	T2-M T3-M			
Color rendering	>80			
Finish	AL+PC lens+Tempered Glass cover			
Lifespan	50,000 Hours			
Certification	CE(EMC LVD) ROHS			
Warranty	5 YEARS			

- Streamline design
- Driver box buckle design
- 0-10V/Dali dimming
- Adjustable arm
- SPD10KV/20KV
- T2 T3 beam angle
- Photocell optional

Galaxy LED street light is featured by innovative design.The optical lenses and LED chips offer great efficiency both from brightness and energy saving. It is particularly suitable for main roads, secondary roads, highway, parking lot, bridge.





Galaxy  
Led Street Light



140lm/w

Model	FR-STG150W	FR-STG180W	FR-STG200W	FR-STG240W
Wattage	150W	180W	200W	240W
Lumen	21000LM	25200LM	28000LM	33600LM
Size	610*297*111mm		700*297*111mm	
Weight	5.2KGS		6.2KGS	
Light Source	SMD 2835			
Color temperature	2700-6500K			
Power Factor	0.95			
Input Voltage	AC100-277V			
IP & IK	IP66 & IK08			
Sensor	Photocell optional			
Beam Angle	T2-M T3-M			
Color rendering	>80			
Finish	AL+PC lens+Tempered Glass cover			
Lifespan	50,000 Hours			
Certification	CE(EMC LVD) ROHS			
Warranty	5 YEARS			

- Streamline design
- Driver box buckle design
- 0-10V/Dali dimming
- Adjustable arm
- SPD10KV/20KV
- T2 T3 beam angle
- Photocell optional

Galaxy LED street light is featured by innovative design.The optical lenses and LED chips offer great efficiency both from brightness and energy saving. It is particularly suitable for main roads, secondary roads, highway, parking lot, bridge.





# Alfa

## Solar Street Light



Model	SL-4W	SL-8W	SL-15W	SL-40W
Wattage	4W	8W	15W	40W
Lumen	400LM	850LM	1600LM	4800LM
Solar Panel	2.3W	7W	9.5W	20W
Life PO4 Battery	2.4AH 3.7V	6AH 3.7V	5.4AH 7.4V	6AH 12.8V
Charging time	8-10 hours			
Working time	Auto adjustable, 4 nights+			
Color temperature	2700-6500K			
Module angle	30° adjustable			
IP Grade	IP65			
Light Source	SMD 2835			
Beam Angle	140°*70°			
Color rendering	>80			
Finish	ABS+PC			
Control	Automatic+Pir sensor			
Certification	CE ROHS MSDS			
Warranty	2 YEARS			

- All in one design
- Monocrystalline solar panel
- Built-in LiFePO4 battery
- Pir sensor integrated
- 3 installation way
- Lamp angle adjustable

This Alfa Series is a state-of-art solar light with an integrated solar Panel. It has the functions of LED flood lamps, LED Wall Lights and street lights. It is best suited for use in open areas such as garden, street and other outdoor areas.





# Compass

## Solar Street Light



Model	SSL-40W-B	SSL-80W-B	SSL-100W-B	SSL-120W-B
Lumen	4000LM	6000LM	10000LM	12000LM
Module	2pcs	4pcs	6pcs	6pcs
Solar Panel	18V 65W	18V 100W	18V 130W	18V 140W
Life PO4 Battery	345WH	729WH	806WH	921WH
Charging time	8-10 hours			
Working time	10-12hours, 5-7 cloudy/ rainy days			
Color temperature	2700-6500K			
Sensor	Microwave sensor integrated			
IP Grade	IP66			
Light Source	Bridgelux SMD			
Beam Angle	140°*70°			
Color rendering	>70			
Finish	AL Alloy body+PC lens			
Control	Time/Sensor(Remote)			
Certification	CE ROHS MSDS			
Warranty	3 YEARS			

- All in one design
- Monocrystalline solar panel
- Built-in LiFePO4 battery
- Aluminum alloy lamp body
- Remote controller
- Integrated motion sensor



This Compass Series is a state-of-art solar light with an integrated solar Panel. It has the functions of LED flood lamps, LED Wall Lights and street lights. It is best suited for use in open areas such as garden, street and other outdoor areas.





# Galaxy

## Solar Street Light



170lm/w

Model	SSL-60W	SSL-80W	SSL-100W	SSL-120W
Wattage	60W	80W	100W	120W
Lumen	10200LM	13600LM	17000LM	20400LM
Solar Panel	18V 80W	18V 100W	18V 130W	18V 170W
Life PO4 Battery	36AH 12.8V	42AH 12.8V	54AH 12.8V	60AH 12.8V
Charging time	6-8 hours			
Working time	12-15hours, 5-7 cloudy/ rainy days			
Color temperature	2700-6500K			
Module angle	15° adjustable			
IP Grade	IP66			
Light Source	Bridgelux 3030			
Beam Angle	140°			
Color rendering	>80			
Finish	AL Alloy+PC			
Control	Automatic+Remote			
Certification	CE ROHS			
Warranty	3 YEARS			

\*Working mode: 3hrs 100% brightness+2hrs 80% brightness+7 hrs 25% brightness

- All in two design
- Monocrystalline solar panel
- Built-in LiFePO4 battery
- Aluminum alloy lamp body
- Remote controller
- Module angle adjustable



Galaxy series is the latest all-in-two solar street light developed by Fireflier. These new lights are highly bright with 170lm/w, relatively long-lasting, adjustable in angle, and equipped with large battery boxes.





**FireFlier**

## Contact Us

Tel: 86-130-88869086

Web: [www.fireflier.com](http://www.fireflier.com)

Email: [info@fireflier.com](mailto:info@fireflier.com)

Add: Pingshan, SZ, China

\* Because Fireflier is continually improving its products, specifications are subject to change without notice.